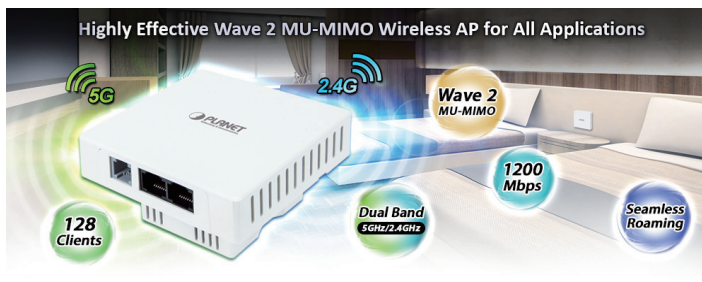


Dual Band 802.11ac 1200Mbps Wave 2 In-wall Wireless Access Point



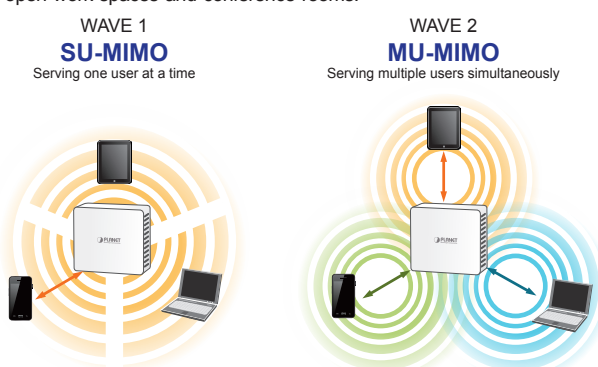
Ultra-high-speed, Wave 2 MU-MIMO All-in-One Manageable Dual-band Wi-Fi Solution for Hotel Industry

PLANET WDAP-W1200E 1200Mbps Wave 2 Dual Band 802.11ac Wireless AP supports central management through PLANET NMS controllers. With IEEE 802.11ac Wave 2 MU-MIMO 2T2R dual-band technology, the WDAP-W1200E provides a maximum wireless speed of 867Mbps at 5GHz and 300Mbps at 2.4GHz. WDAP-W1200E conforms to the **standard 86-type** electrical junction box and supports **IEEE 802.3af/at PoE**. It is suitable for in-wall installation enabling to integrate the hotel network with its all-in-one interface. The WDAP-W1200E also provides stable 2.4GHz and 5GHz wireless signals simultaneously that make access to internet viable in regard to whatever nature of work you are into.



Benefits of MU-MIMO under 802.11ac Wave 2

With the MU-MIMO Wave 2 technology, the WDAP-W1200E, installed in public areas such as hotspots, airports and conferences, reduces the frustration that Wi-Fi users often experience in downloading web pages, e-mail file attachments and media contents. For cellular operators, the WDAP-W1200E provides a better Wi-Fi user experience, reducing the likelihood of users turning off Wi-Fi and putting more load on the cellular network. For enterprises, this technology also can solve Wi-Fi congestion issues in open work spaces and conference rooms.



Standard Compliant Hardware Interface

- Compliant with IEEE 802.11ac Wave 2 wireless technology with data rate of up to 1200Mbps
- 3 x 10/100/1000BASE-TX port and one PoE powered device (PD/WAN) port
- Support 1 x RJ11 port for traditional phone using
- European 86-type wall outlet compatibility

Secure Network Connection

- Advanced security: 64-/128-bit WEP, WPA/WPA2 and WPA-PSK/WPA2-PSK (TKIP/AES encryption), 802.1x
- Supports wireless MAC address filtering control to limit the connected wireless clients
- Supports 802.1Q VLAN and SSID-to-VLAN mapping
- Supports IP/Port/MAC address/URL filtering, DoS, SPI firewall
- Supports DMZ and port forwarding
- Bandwidth control per IP address to increase network stability

Multiple Operation Modes and Wireless Features

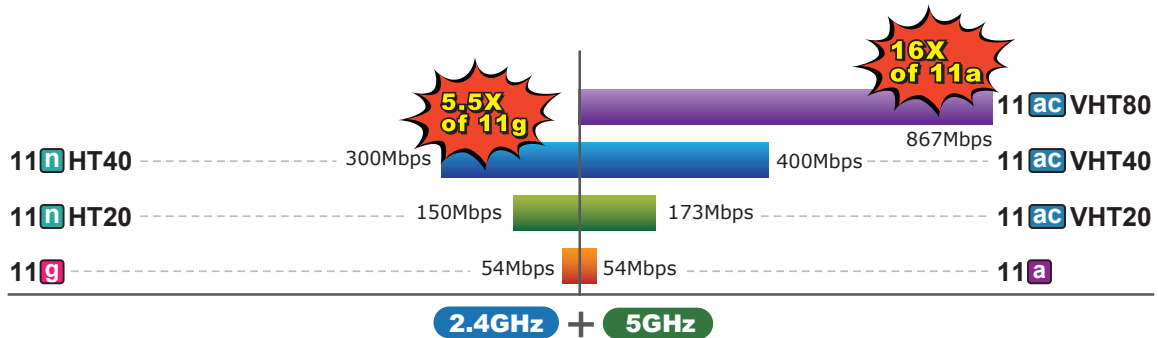
- Multiple operation modes: AP, Gateway, Repeater, WDS, WISP
- WMM (Wi-Fi multimedia) provides higher priority to multimedia transmitting over wireless
- Coverage threshold to limit the weak signal of clients occupying session
- Real-time Wi-Fi channel analysis chart and client limit control for better performance

Easy Deployment and Management

- Supports PLANET WS/NMS AP Controllers in AP mode
- Easy discovery by PLANET Smart Discovery
- Self-healing mechanism through system auto reboot setting
- System status monitoring through remote Syslog Server
- Supports PLANET DDNS/Easy DDNS

Powerful Dual-band WLAN Solution

PLANET WDAP-W1200E, adopting the IEEE 802.11ac Wave 2 standard, provides a high-speed transmission of power and data, meaning two remote nodes in the 5GHz frequency band can be bridged. The 2.4GHz wireless connection can also be used simultaneously. Furthermore, the WDAP-W1200E adopts the high-class Qualcomm Atheros SoC (System-on-a-Chip), which provides higher stability to meet the stringent requirements of the solution.

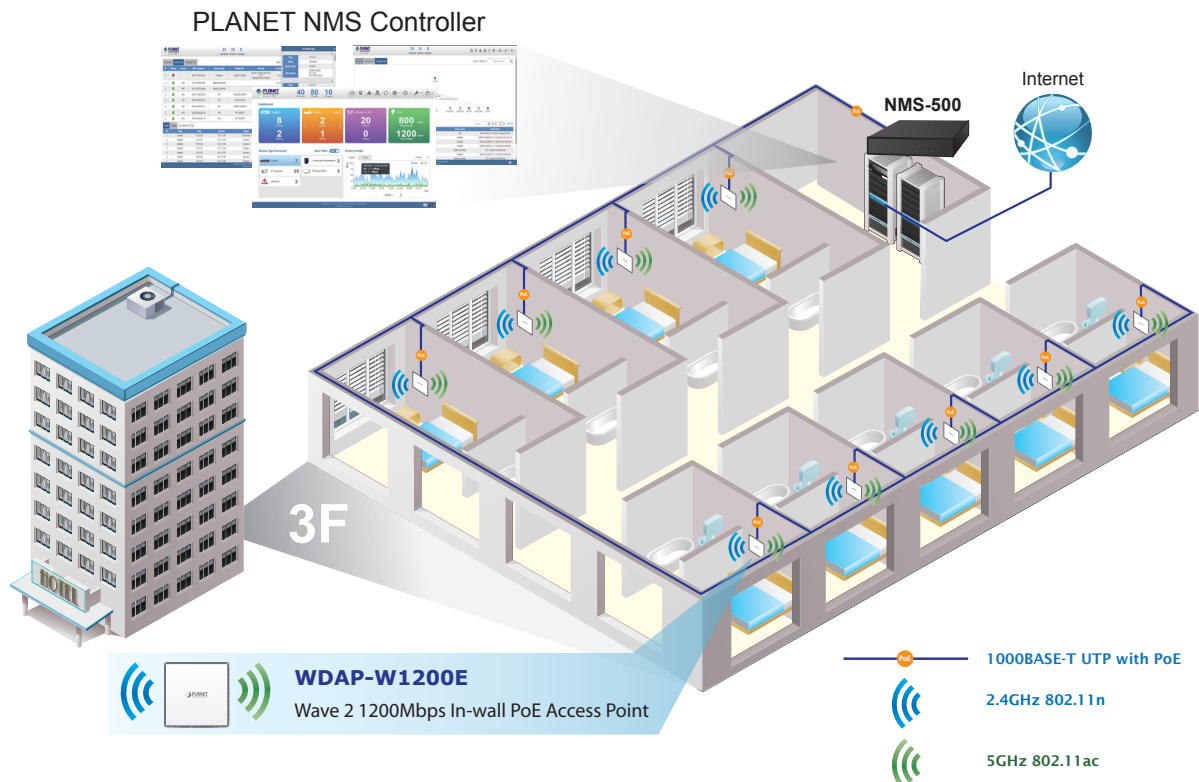


WDAP-W1200E Data Transmission Rates 1200Mbps

Easy Deployment with PLANET AP Controller

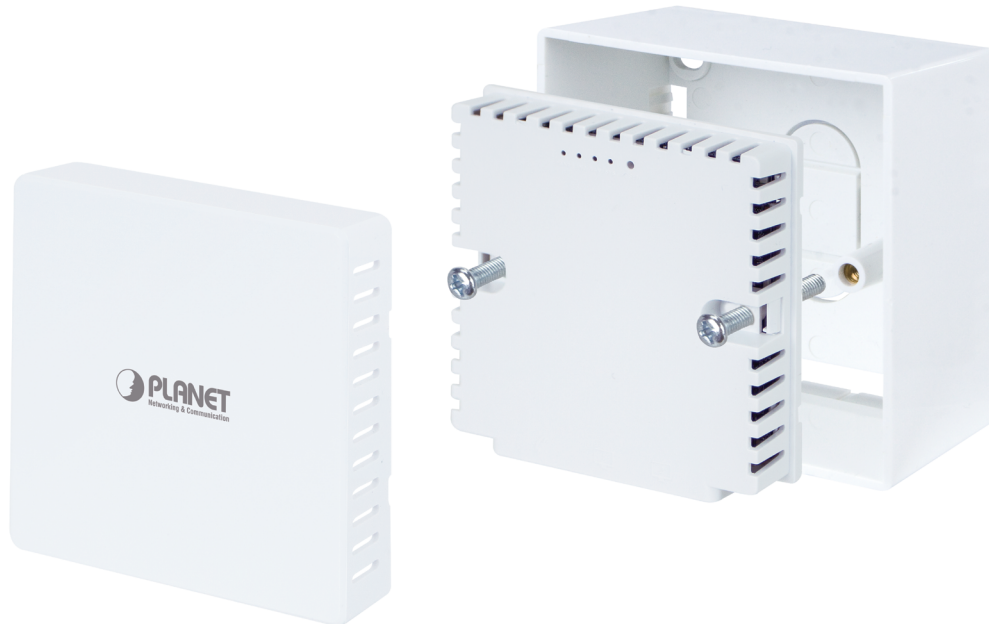
To expand the capability of in-wall AP, PLANET WDAP-W1200E comes with centralized management, enabling the hospitality industry to deploy multiple APs with a single interface of **AP controller** and reducing repetitive tasks including **AP provisioning**, **AP status monitoring** and **AP maintenance**. In addition, by connecting with PLANET AP controller, PLANET WDAP-W1200E helps hoteliers optimize their wireless network within minutes.

Wi-Fi Hotel Networking



Suitable for Any Room Installation without Spoiling Interior Design

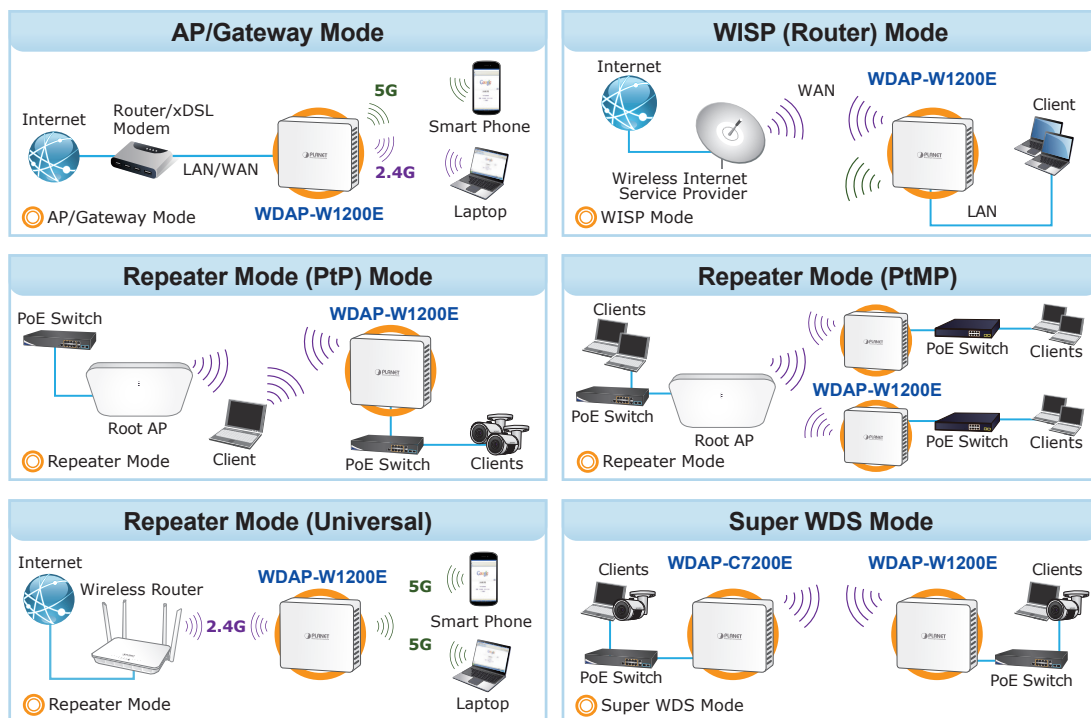
Featuring attractive in-wall design, the WDAP-W1200E can be firmly installed into the wall via the standard **86 x 86 mm** European outlet box, which makes electrical wiring invisible and convenient for room installation without affecting the original interior design. It is ideal for hotels, residences, hospitals and more to establish any kind of wireless network.



(86 x 86mm box not included)

Comprehensive Wireless Operation Modes

The WDAP-W1200E supports multiple wireless communication connectivities such as AP, Gateway, WISP, Repeater (Point-to-Point (PtP), Point-to-Multipoint (PtMP) and Super WDS, allowing users to comprehensively experience various applications.



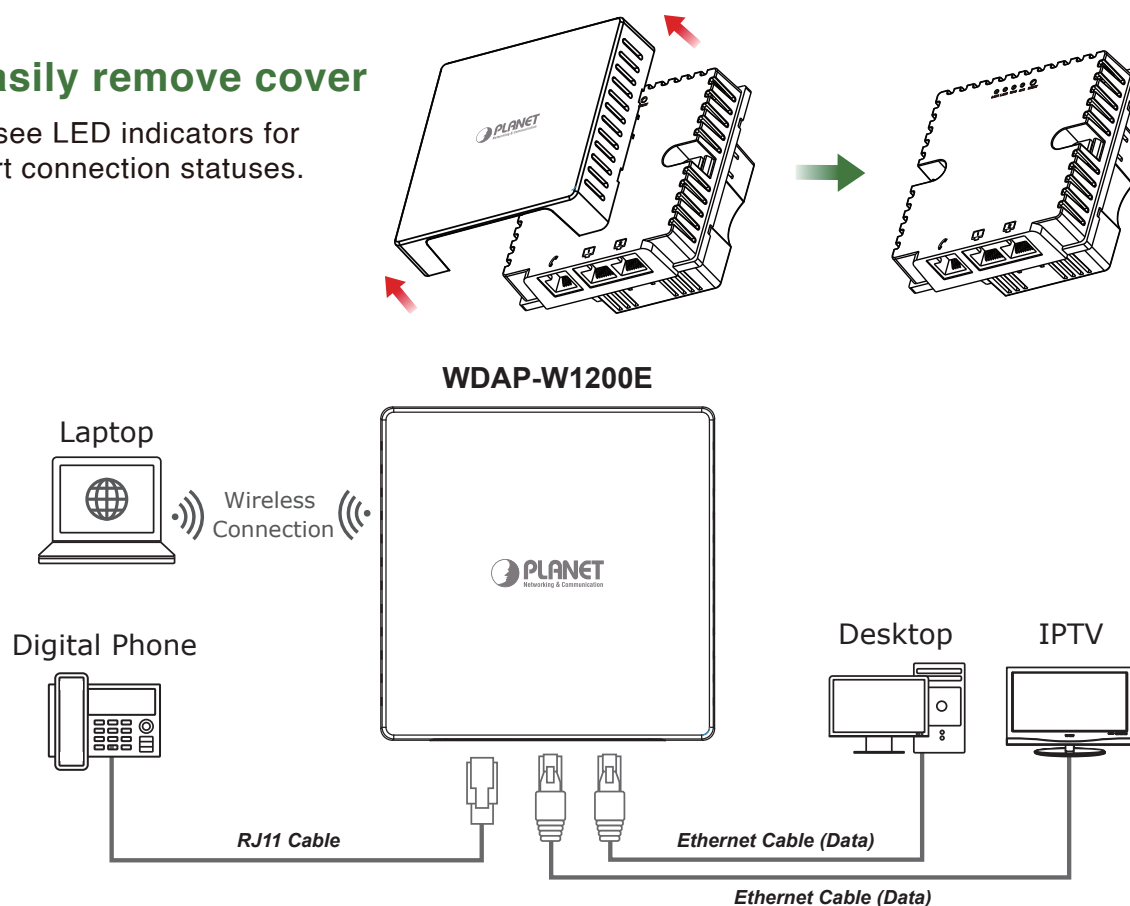
(((2.4GHz 802.11n))) (((5GHz 802.11ac)))

Basic Features Worth Mentioning

There are LED indicators showing LAN1, LAN2, WAN (in Gateway and WISP modes) and SYS (power) statuses when the cover of the WDAP-W1200E is removed. Along the indicators is the reset button for rebooting to the factory default mode. On the back of the unit are two Ethernet ports used for one IPTV and one desktop PC, and one RJ11 port used for one digital phone.

Easily remove cover

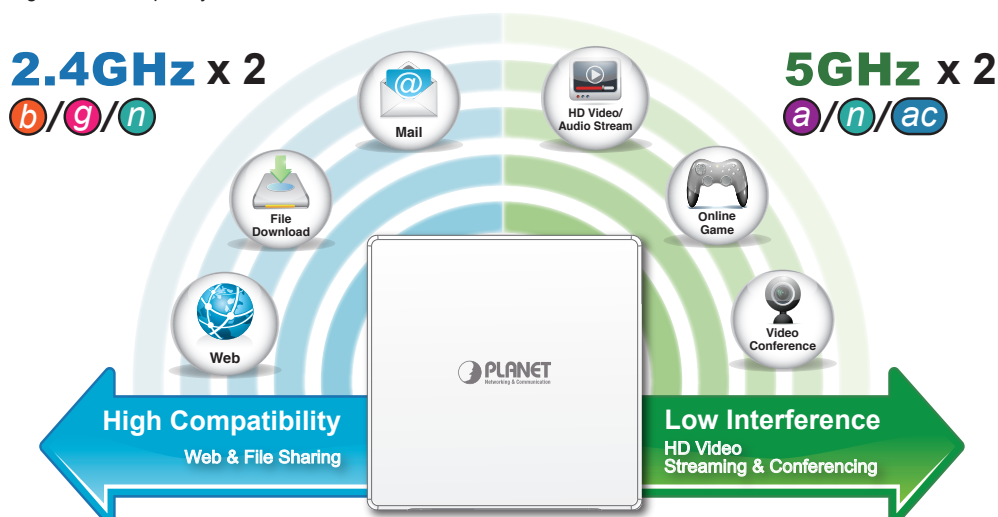
to see LED indicators for port connection statuses.



Applications

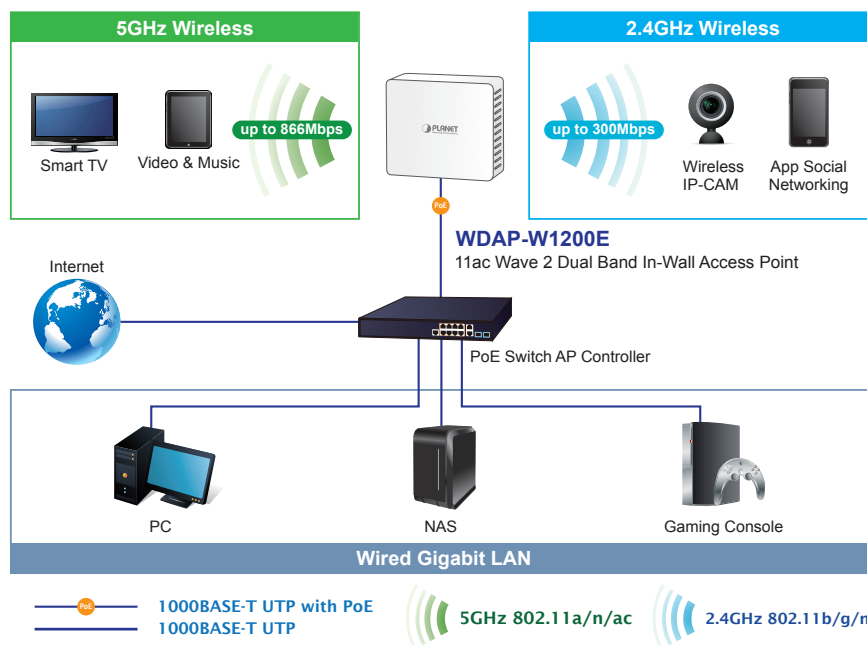
Simultaneous Dual Band Wireless Connectivity

Since there are more and more wireless applications and electrical devices using the radio frequency of 2.4GHz, the wireless channel of 2.4GHz has been already too crowded for clients to enjoy the high-speed wireless connection. In order to avoid the wireless interference between each other, PLANET WDAP-W1200E provides users with the radio frequency of 5GHz for watching HD videos or playing online games. At the same time, it enables other users to surf the Internet via the original radio frequency of 2.4 GHz.



In-wall Design Ideal for High-density Wireless Network

The WDAP-W1200E is specifically designed for hotels, offering guests convenient wireless LAN service. With the standard 86 type electrical outlet box installed and PLANET AP controller supported, you don't need to spend extra time and cost to deploy the wireless network. Its compact and all-in-one interface adapted to the room can match any decor and makes wiring invisible. The WDAP-W1200E brings convenience to system administrators or machine operators as it comes with centralized management characteristic and comprehensive operation modes to fulfill any application at hotels and residences. No expensive instruments or complex back-end subscriber managed systems are required for deployment.



Fast Roaming and Better Coverage

Moving between a traditional Wi-Fi AP or router and range extender your Wi-Fi signal can experience lag or a dropped connection. With Fast Roaming and intuitive technology, moving from room to room is never a problem now that your devices are switched to the strongest Wi-Fi signal automatically. The WDAP-W1200E features in-wall design, and advanced 2T2R Wave 2 MU-MIMO technology which reduces the effect of dead spot, so that it can get better coverage of the existing wireless network. Furthermore, the repeater mode supported by the WDAP-W1200E helps to minimize the effort of installation, thus reducing cabling cost..



Specifications

Product		WDAP-W1200E	
Hardware Specifications			
Interfaces	LAN	2 x 10/100/1000BASE-TX RJ45 port Auto-negotiation and auto MDI/MDI-X	
	PoE Port	1 x 10/100/1000Mbps auto MDI/MDI-X RJ45 port (rear panel) * IEEE 802.3af/at PD port	
	RJ11 Port	Six-position four-conductor (6P4C) modular jack	
Antennas	Gain	4 x 2dBi antenna	
Button	Reset button (Press over 10seconds to reset the device to the factory default)		
LED Indicators	LAN1/LAN2/WAN/SYS		
Dimensions (W x D x H)	86 x 45 x 86 mm		
Weight	168 ± 5g		
Power Requirements	48V DC IN, 0.5A, IEEE 802.3af/at PoE+		
Power Consumption	< 8W		
Mounting	In-wall mount		
Wireless Interface Specifications			
Standard	IEEE 802.11ac IEEE 802.11n IEEE 802.11a IEEE 802.11b IEEE 802.11g IEEE 802.11i IEEE 802.3 10BASE-T IEEE 802.3u 100BASE-TX IEEE 802.3x flow control		
	Media Access Control	CSMA/CA	
	Data Modulation	802.11ac: OFDM (BPSK / QPSK / 16QAM / 64QAM / 256QAM) 802.11a/g/n: OFDM (BPSK / QPSK / 16QAM / 64QAM) 802.11b: DSSS (DBPSK / DQPSK / CCK)	
	Band Mode	2.4G / 5G concurrent mode	
	Frequency Range	2.4GHz: FCC: 2.412~2.462GHz ETSI: 2.412~2.472GHz 5GHz: FCC: 5.180~5.240GHz, 5.745~5.825GHz ETSI: 5.180~5.700GHz	
	Operating Channels	FCC: 36, 40, 44, 48, 149, 153, 157, 161, 165 (9 channels) ETSI: 36, 40, 44, 48, 100, 104, 108, 112, 116, 132, 136, 140 (12 channels) 5GHz channel list will vary in different countries according to their regulations.	
	RF Power	<20dBm (EIRP)	
	Receive Sensitivity	Network Mode	Data Rate
2.4GHz			
802.11b		1Mbps	-88
		11Mbps	-85
802.11g		6Mbps	-88
		54Mbps	-68
802.11n HT20		MCS0/MCS8	-95
		MCS7/MCS15	-77
802.11n HT40		MCS0/MCS8	-93
		MCS7/MCS15	-75
5GHz			
802.11a		6Mbps	-92
		54Mbps	-75
802.11n HT20		MCS0/MCS8	-91
		MCS7/MCS15	-72
802.11n HT40		MCS0/MCS8	-88
		MCS7/MCS15	-70
802.11ac VHT20		MCS0	-92
		MCS8	-70
802.11ac VHT40		MCS0	-89
		MCS9	-65
802.11ac VHT80		MCS0	-87
		MCS9	-61

Software Features	
LAN	Static IP/DHCP Client Supports IP-MAC binding
WAN	<ul style="list-style-type: none"> ■ Static IP ■ Dynamic IP ■ PPPoE
Wireless Mode	<ul style="list-style-type: none"> ■ Access Point ■ Gateway ■ WISP ■ Repeater ■ Super WDS
Channel Width	20MHz, 40MHz, 80MHz
Encryption Security	64-/128-bit WEP, WPA, WPA-PSK, WPA2, WPA2-PSK, 802.1X
Wireless Security	Enable/Disable SSID Broadcast Wireless – filtering of max. 32 MAC addresses User Isolation
Max. SSIDs	8 (4 per radio)
Max. Clients	128 (100 is suggested, depending on usage)
Max. WDS Peers	4
Wireless QoS	Supports Wi-Fi Multimedia (WMM)
Wireless Advanced	Auto channel selection 5-level transmit power control (100%, 75%, 50%, 25%, 12.5%) Client limit control, coverage threshold Wi-Fi channel analysis chart Fast Roaming
Status Monitoring	Device status, wireless client list PLANET Smart Discovery DHCP client table System Log supports remote syslog server
VLAN	IEEE 802.1Q VLAN (VID: 3~4094) SSID-to-VLAN mapping to up to 4 SSIDs
Self-healing	Supports auto reboot settings per day/hour
Management	Remote management through PLANET DDNS/Easy DDNS Configuration backup and restoration Supports UPnP Supports IGMP Proxy Supports PPTP/L2TP/IPSec VPN Pass-through SNMP v1/v2c/v3 support, MIB I/II, Private MIB
Central Management*	Applicable controllers: NMS-500/NMS-1000V, WS-1232P, WS-2864PVR
*Remarks: The feature will be supported through firmware/system upgrade.	
Environment & Certification	
Temperature	Operating: -20 ~ 55 degrees C Storage: -40 ~ 70 degrees C
Humidity	Operating: 10 ~ 90% (non-condensing) Storage: 5 ~ 95% (non-condensing)
Regulatory	CE, RoHS

Ordering Information

WDAP-W1200E	Dual Band 802.11ac 1200Mbps Wave 2 In-wall Wireless Access Point (EU Type, 802.3at PoE, 3 x 10/100/1000T LAN Ports, 1 x RJ11 Port)
-------------	--

Related Wireless Products

WDAP-C7210E	1200Mbps 802.11ac Wave 2 Dual Band Ceiling-mount Wireless Access Point w/802.3at PoE+ and 2 10/100/1000T LAN Ports
WDAP-W750E	750Mbps 802.11ac Dual Band In-wall Wireless Access Point w/ USB Charger (EU Type, 802.3af/at PoE, 10/100TX LAN)

Related PoE & APC Products

WS-1232P	Wireless AP Managed Switch with 8-Port 802.3at PoE + 2-port 10G SFP+
WS-2864PVR	Wireless AP Managed Switch with 24-Port 802.3at PoE + 4-Port 10G SFP+ + LCD touch Screen and 48VDC Redundant Power
NMS-500	Enterprise-class Universal Network Management Controller - 500 nodes, 5 10/100/1000T LAN Ports
NMS-1000V-10	Universal Network Management Controller with 10" LCD Touch screen- 1024 nodes, 2 10/100/1000T LAN Ports
NMS-1000V-12	Universal Network Management Controller with 12" LCD Touch screen- 1024 nodes, 2 10/100/1000T LAN Ports

PLANET Technology Corporation

11F., No.96, Minquan Rd., Xindian Dist., New Taipei City 231,
Taiwan (R.O.C.)

Tel: 886-2-2219-9518

Email: sales@planet.com.tw

Fax: 886-2-2219-9528

www.planet.com.tw



PLANET reserves the right to change specifications without prior notice. All brand names and trademarks are property of their respective owners. Copyright © 2021 PLANET Technology Corp. All rights reserved.

WDAP-W1200E